

I recently bought a faulty Brother MFC-L2700DW on eBay. It would not print or do anything useful. It would come up with a memory full error. When I go into maintenance mode and check the firmware it comes up as NG which indicates a firmware corruption. I tried filedg32.exe, BRAdmin Prof and FTP but could not reinstall the firmware. I wondered if it was possible to the MS WinUSB driver to try and reinstall the firmware via the USB lead. So I added a Brother menu and dialog to FlightMirage a little app of mine that is still an early beta. It could send the firmware file to the printer but still the firmware did not reinstall. This might be because the printer is stuffed. The program might work with other printers so I've put it on the web for people to try. This LibreOffice doc gives some info on how to use the program to try and reinstall Brother firmware. The FlightMirage is untested and you use it at your own risk. It might work or it might not.

FlightMirage an early beta release of a new Dump1090 plane monitor app but in a MS Windows 10 Win32 app.

This beta release is so early the app does not have it's proper name yet, for now it is called PMTest2.exe.

The Windows 10 app can be downloaded from here <http://www.stevematt.f9.co.uk/flightmirage/brother.zip> Unzip the file using 7-Zip or right click it and choose Extract All. The PMTest2.exe file does not use an installer just double click the file when you want to run the app. If you have Smartscreen turned on the first time you run the PMTest2.exe program it will tell you the program is from an unknown vendor. Click on More info and run the program and after that it will start OK.

See the web site for more info on how to use it and other software that needs to be installed for it to run. You will also need to download Zadig to install the WINUSB driver. Have a look at my web page <http://www.stevematt.f9.co.uk/flightmirage/usbstick.html> for more info on Zadig.

For the PMTest2.exe you will need to install Microsoft Visual C++ 2015 Redistributable Update 3. It can be downloaded from the Microsoft web site at: <https://www.microsoft.com/en-us/download/details.aspx?id=53840> PMTest2.exe is a 32 bit VS2015 C++ app and you'll need the x86 version of the C++ Redistributable vc_redist.x86.exe.

The dll's need Visual C++ Redistributable for Visual Studio 2012

It can be downloaded from: <https://www.microsoft.com/en-us/download/details.aspx?id=30679>

You'll need the x86 version of the VS2012 C++ Redistributable vc_redist.x86.exe, It's the same name as the VS2015 file but is different so when you download it save it with a different name.

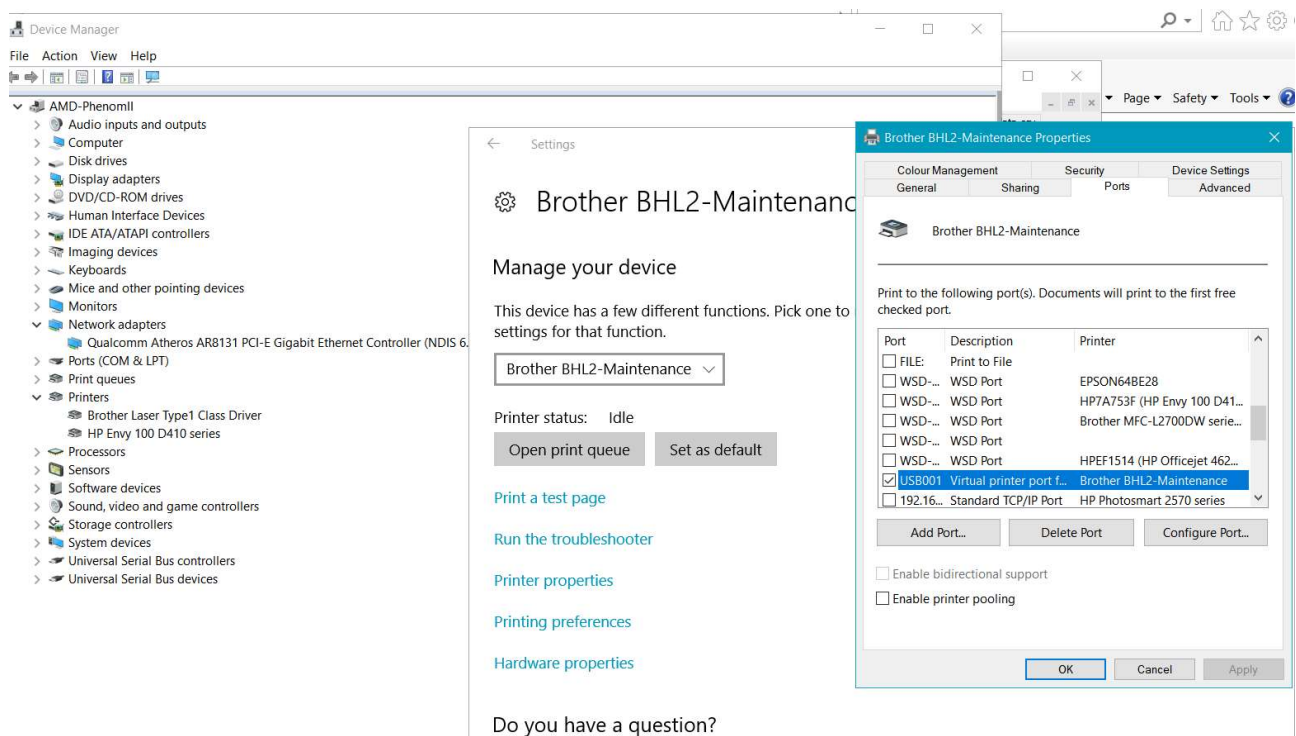
You can run PMTest2.exe on earlier versions of Windows from version 8 onwards but you might need to install the latest

Microsoft .NET Framework 4.6.1

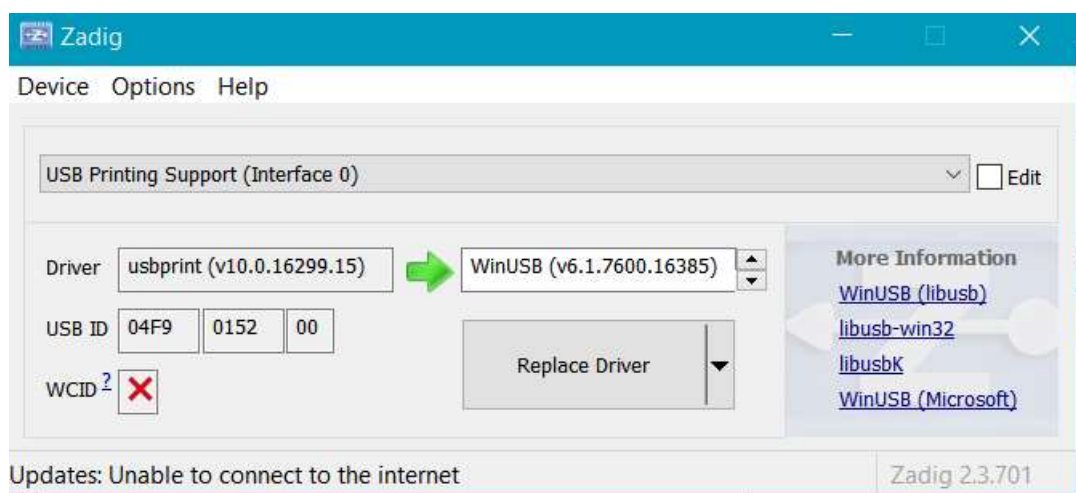
from

<https://www.microsoft.com/en-us/download/details.aspx?id=49982>

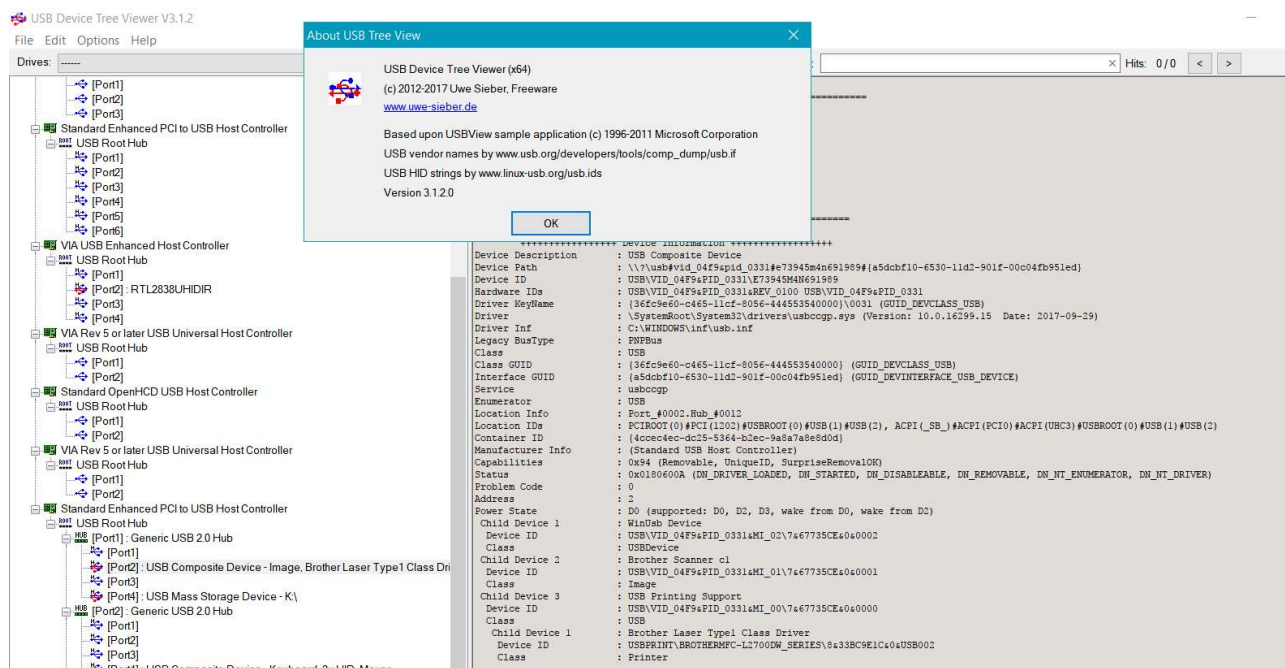
Put your printer into maintenance mode. On the Brother MFC-L2700DW it's done by pressing Menu, *, 2,8,6,4 very quickly take no more than 2 seconds to do this. If you don't succeed first time press Stop and try again. Plug your USB lead into your PC and let Windows 10 install it's driver. Any time you change to maintenance mode with your USB lead plugged in you need to unplug and plug back in.



Run Zadig and replace the driver with Winusb. Then reboot Windows 10 to make sure the driver is active.



Be careful to replace your printer driver and not some other devices driver. Check that the USB ID in Zadig matches your printer VID and PID. The best way to do that is to download Uwe Siebers USB viewer.



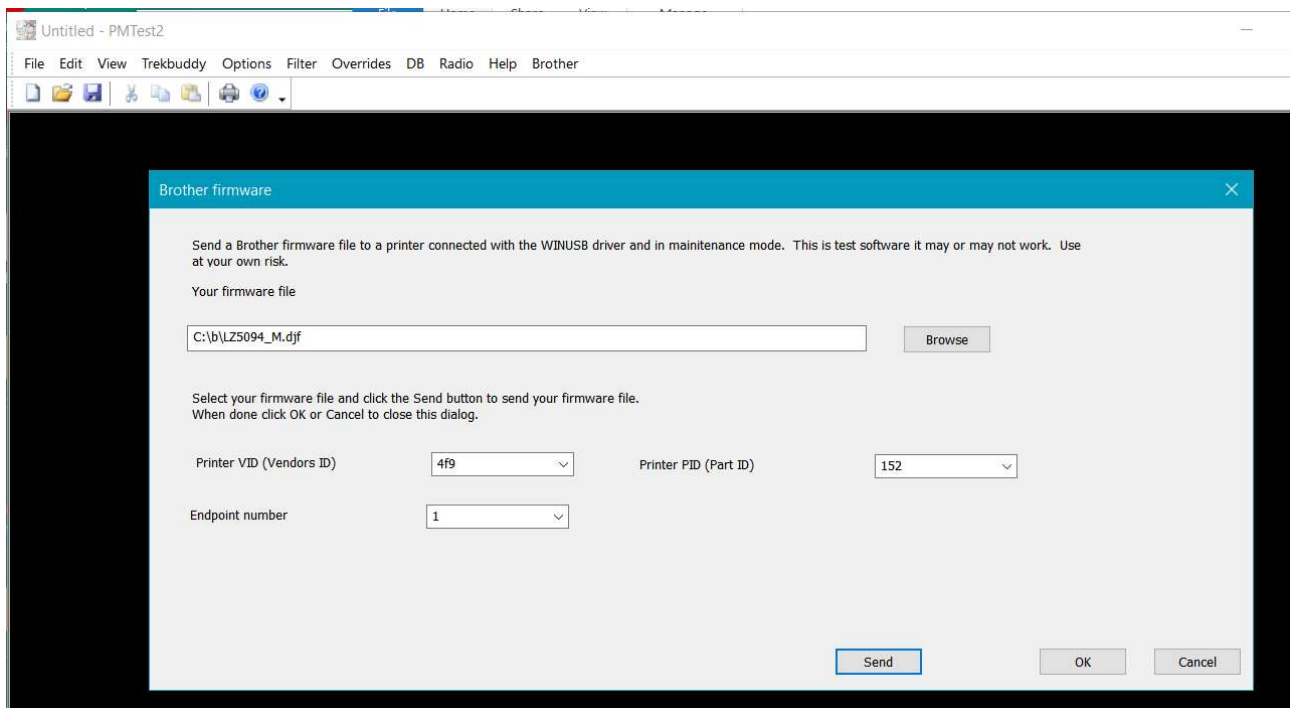
Your printer will have two Pids. One in normal mode and another when in maintenance mode.

Firmware files can be downloaded using info from
<http://pschla.blogspot.co.uk/2013/08/resurrecting-brother-hl-2250dn-after.html>

Start the PMTest2.exe program. On the Brother menu click Send Firmware.
Select your file, Vid and PID. On my printer I could only send to Endpoint number 1.

Click send. The program will send your file to all devices with your VID and PID.
If you only want to send to one you could try disabling the others in Device Manager.
It might work it might not. You might need to experiment with end point numbers.

You can only send to devices that have the Winusb driver installed.



When the file is sent you should see a Good send window. If you get nothing the file did not send.



Other screen grabs.

New5.xml

```
<?xml version="1.0" encoding="windows-1250"?>
<REQUESTINFO>
  <FIRMUPDATETOOLINFO>
    <FIRMCATEGORY>MAIN</FIRMCATEGORY>
    <OS>WINDOWS</OS>
    <INSPECTMODE>1</INSPECTMODE>
  </FIRMUPDATETOOLINFO>
  <FIRMUPDATEINFO>
    <MODELINFO>
      <SERIALNO></SERIALNO>
      <NAME>MFC-L2700DW series</NAME>
      <SPEC>0004</SPEC>
      <DRIVER></DRIVER>
      <FIRMINFO>
```

```
<FIRM>
  <ID>MAIN</ID>
  <VERSION>E1410031730:8E3F</VERSION>
</FIRM>
</FIRMINFO>
</MODELINFO>
<DRIVERCNT>1</DRIVERCNT>
<LOGNO>2</LOGNO>
<ERRBIT></ERRBIT>
<NEEDRESPONSE>1</NEEDRESPONSE>
</FIRMUPDATEINFO>
</REQUESTINFO>
```

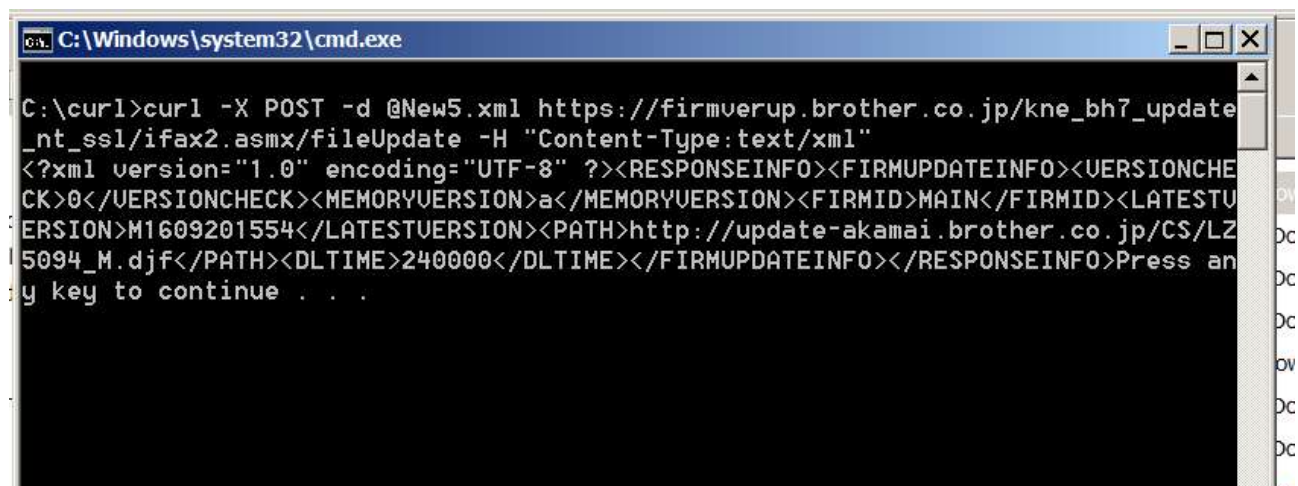
go5.bat

```
curl -X POST -d @New5.xml
```

```
https://firmverup.brother.co.jp/kne_bh7_update_nt_ssl/ifax2.asmx/fileUpdate -H
```

```
"Content-Type:text/xml"
```

```
@pause
```



```
C:\Windows\system32\cmd.exe

C:\curl>curl -X POST -d @New5.xml https://firmverup.brother.co.jp/kne_bh7_update_nt_ssl/ifax2.asmx/fileUpdate -H "Content-Type:text/xml"
<?xml version="1.0" encoding="UTF-8" ?><RESPONSEINFO><FIRMUPDATEINFO><VERSIONCHECK>0</VERSIONCHECK><MEMORYVERSION>a</MEMORYVERSION><FIRMID>MAIN</FIRMID><LATESTVERSION>M1609201554</LATESTVERSION><PATH>http://update-akamai.brother.co.jp/CS/LZ5094_M.djf</PATH><DLTIME>240000</DLTIME></FIRMUPDATEINFO></RESPONSEINFO>Press any key to continue . . .
```


iReasoning MIB Browser

File Edit Operations Tools Bookmarks Help

Address: 192.168.1.66 Advanced... OID: .1.3.6.1.4.1.2435.2.4.3.99.3.1.6.1.2.8 Operations: Get Go

SNMP MIBs

MIB Tree

iso.org.dod.internet.mgmt.mib-2

Name	OID
mib-2	.1.3.6.1.2.1
SNMPv2-SMI	
Syntax	
Access	
Status	
DefVal	
Indexes	
Descr	

Name/OID	Value	Type	IP:Port
.1.3.6.1.4.1.2435.2.4.3.99.3.1.5.1.1.15	15	Integer	192.168.1.66:161
.1.3.6.1.4.1.2435.2.4.3.99.3.1.5.1.1.16	16	Integer	192.168.1.66:161
.1.3.6.1.4.1.2435.2.4.3.99.3.1.5.1.2.1	STORAGE [2 TABLES]	OctetString	192.168.1.66:161
.1.3.6.1.4.1.2435.2.4.3.99.3.1.5.1.2.2	NAMETYPESIZEREMAIN	OctetString	192.168.1.66:161
.1.3.6.1.4.1.2435.2.4.3.99.3.1.5.1.2.3	DIMMRAM3276832768	OctetString	192.168.1.66:161
.1.3.6.1.4.1.2435.2.4.3.99.3.1.5.1.2.4	0x0C	OctetString	192.168.1.66:161
.1.3.6.1.4.1.2435.2.4.3.99.3.1.5.1.2.5	0x0C	OctetString	192.168.1.66:161
.1.3.6.1.4.1.2435.2.4.3.99.3.1.5.1.2.6	0x0C	OctetString	192.168.1.66:161
.1.3.6.1.4.1.2435.2.4.3.99.3.1.5.1.2.7	0x0C	OctetString	192.168.1.66:161
.1.3.6.1.4.1.2435.2.4.3.99.3.1.5.1.2.8	0x0C	OctetString	192.168.1.66:161
.1.3.6.1.4.1.2435.2.4.3.99.3.1.5.1.2.9	0x0C	OctetString	192.168.1.66:161
.1.3.6.1.4.1.2435.2.4.3.99.3.1.5.1.2.10	0x0C	OctetString	192.168.1.66:161
.1.3.6.1.4.1.2435.2.4.3.99.3.1.5.1.2.11	0x0C	OctetString	192.168.1.66:161
.1.3.6.1.4.1.2435.2.4.3.99.3.1.5.1.2.12	0x0C	OctetString	192.168.1.66:161
.1.3.6.1.4.1.2435.2.4.3.99.3.1.5.1.2.13	0x0C	OctetString	192.168.1.66:161
.1.3.6.1.4.1.2435.2.4.3.99.3.1.5.1.2.14	0x0C	OctetString	192.168.1.66:161
.1.3.6.1.4.1.2435.2.4.3.99.3.1.5.1.2.15	0x0C	OctetString	192.168.1.66:161
.1.3.6.1.4.1.2435.2.4.3.99.3.1.5.1.2.16	0x0C	OctetString	192.168.1.66:161
.1.3.6.1.4.1.2435.2.4.3.99.3.1.6.1.1.1	1	Integer	192.168.1.66:161
.1.3.6.1.4.1.2435.2.4.3.99.3.1.6.1.1.2	2	Integer	192.168.1.66:161
.1.3.6.1.4.1.2435.2.4.3.99.3.1.6.1.1.3	3	Integer	192.168.1.66:161
.1.3.6.1.4.1.2435.2.4.3.99.3.1.6.1.1.4	4	Integer	192.168.1.66:161
.1.3.6.1.4.1.2435.2.4.3.99.3.1.6.1.1.5	5	Integer	192.168.1.66:161
.1.3.6.1.4.1.2435.2.4.3.99.3.1.6.1.1.6	6	Integer	192.168.1.66:161
.1.3.6.1.4.1.2435.2.4.3.99.3.1.6.1.1.7	7	Integer	192.168.1.66:161
.1.3.6.1.4.1.2435.2.4.3.99.3.1.6.1.1.8	8	Integer	192.168.1.66:161
.1.3.6.1.4.1.2435.2.4.3.99.3.1.6.1.1.9	9	Integer	192.168.1.66:161
.1.3.6.1.4.1.2435.2.4.3.99.3.1.6.1.1.10	10	Integer	192.168.1.66:161
.1.3.6.1.4.1.2435.2.4.3.99.3.1.6.1.1.11	11	Integer	192.168.1.66:161
.1.3.6.1.4.1.2435.2.4.3.99.3.1.6.1.1.12	12	Integer	192.168.1.66:161
.1.3.6.1.4.1.2435.2.4.3.99.3.1.6.1.1.13	13	Integer	192.168.1.66:161
.1.3.6.1.4.1.2435.2.4.3.99.3.1.6.1.1.14	14	Integer	192.168.1.66:161
.1.3.6.1.4.1.2435.2.4.3.99.3.1.6.1.1.15	15	Integer	192.168.1.66:161
.1.3.6.1.4.1.2435.2.4.3.99.3.1.6.1.1.16	16	Integer	192.168.1.66:161
.1.3.6.1.4.1.2435.2.4.3.99.3.1.6.1.2.1	MODEL="MFC-L2700DW series"	OctetString	192.168.1.66:161
.1.3.6.1.4.1.2435.2.4.3.99.3.1.6.1.2.2	CTYPE="MFC"	OctetString	192.168.1.66:161
.1.3.6.1.4.1.2435.2.4.3.99.3.1.6.1.2.3	SERIAL="E73945M4N691989"	OctetString	192.168.1.66:161
.1.3.6.1.4.1.2435.2.4.3.99.3.1.6.1.2.4	SPEC="0004"	OctetString	192.168.1.66:161
.1.3.6.1.4.1.2435.2.4.3.99.3.1.6.1.2.5	DEMOID="?"	OctetString	192.168.1.66:161
.1.3.6.1.4.1.2435.2.4.3.99.3.1.6.1.2.6	FONT="?"	OctetString	192.168.1.66:161
.1.3.6.1.4.1.2435.2.4.3.99.3.1.6.1.2.7	FIRMID="MAIN"	OctetString	192.168.1.66:161
.1.3.6.1.4.1.2435.2.4.3.99.3.1.6.1.2.8	FIRMVER="E1410031730:8E3F"	OctetString	192.168.1.66:161
.1.3.6.1.4.1.2435.2.4.3.99.3.1.6.1.2.9	0x0C	OctetString	192.168.1.66:161
.1.3.6.1.4.1.2435.2.4.3.99.3.1.6.1.2.10	0x0C	OctetString	192.168.1.66:161
.1.3.6.1.4.1.2435.2.4.3.99.3.1.6.1.2.11	0x0C	OctetString	192.168.1.66:161
.1.3.6.1.4.1.2435.2.4.3.99.3.1.6.1.2.12	0x0C	OctetString	192.168.1.66:161
.1.3.6.1.4.1.2435.2.4.3.99.3.1.6.1.2.13	0x0C	OctetString	192.168.1.66:161
.1.3.6.1.4.1.2435.2.4.3.99.3.1.6.1.2.14	0x0C	OctetString	192.168.1.66:161

.1.3.6.1.4.1.2435.2.4.3.99.3.1.6.1.2.8

No